

YEAR 1



newsletter

Edition 5

22nd November 2024

WHAT HAVE WE LEARNT?

English: Continuing with our focus on instructions, we have been writing our own instructions on how to post a letter. We have needed to check we have included verbs, numbered steps and written full sentences.

Phonics: We have now learnt different spellings for the sounds /æ/ and /ee/ and /oe/. We have begun learning all the different spellings for the sound /er/. You will receive a sheet each time we learn a new sound so that you can help support your child at home.

Maths: Children have been learning to find number bonds in a systematic way so that all pairs of numbers are identified e.g. $0+10=10$, $1+9=10$, $2+8=10$. We have used the Part-Whole model and counters to help us. Knowing number bonds to 10 have supported us in solving word problems.

Science: We have looked closely at the groups of animals: Reptiles, Mammals, Amphibians, Birds and Fish. The children have identified differences and similarities. We have also identified the body parts on different animals.

Geography: We have identified where our local area is, using Google Earth and looked at different kinds of maps.

RE: We have been learning about how different religions welcome babies and we have made comparisons.

PSHE: We have been thinking about our strengths and have tried setting our own goals.

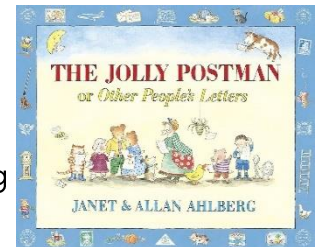
PE: In gymnastics, we have been using our bodies to travel in different ways at different levels. Thinking about how different animals travel, we have moved in different ways and linked our movements to create a sequence.

WHAT ARE WE READING?

We are continuing to use 'The Jolly Postman' to support our writing of instructions.

We have been interested in the different kinds of post people send and receive.

Everyone loves opening the flaps and letters in the book.



COMING UP

23 NOVEMBER

PTA Christmas Fair

20 DECEMBER

Church Christmas Service

REMINDERS

- Show and Tell – We would love to see your **achievement awards**. These can be given to your teacher at the start of the day.
- Please remember that children should not be bringing toys or notebooks and pens into school please, this is to save loss of personal items.
- Please send in **jogging bottoms and black sweatshirts** for PE now that the weather is becoming colder.
- Please ensure your child has a named jumper and coat at all times.

