

## Loose Primary School – Handwriting Policy

### Key Aims and Expectations

- All children recognise all 26 letter shapes for writing that make up the alphabet code in the English language
- All children form letters that are reasonably spaced and are proportionate to one another with accuracy and at pace
- Across their learning journey, all children develop a consistent cursive script which is neat and legible
- Children take pride in their written work and embrace opportunities to communicate their knowledge through encoding with letters correctly formed

### Objectives

- To develop fine motor control in order to hold a pencil in a comfortable and correct manner
- To write letters and words which are regularly spaced on the page
- In EYFS and Year 1, to form simple print letters in accordance with the Sounds Write programme with attention to directional strokes
- At the end of Year 1 into early Year 2, to form pre-cursive letters with accurate lead in and lead outs (entry and exit points) in preparation for a joined handwriting style
- In KS2, to form cursive letters that are joined across words
- To form lower case letters that sit between the lines with proportionate ascenders and descenders that are parallel and equidistant
- To incrementally build on handwriting knowledge and skills to encode with speed, precision and legibility

### Pre-Requisites

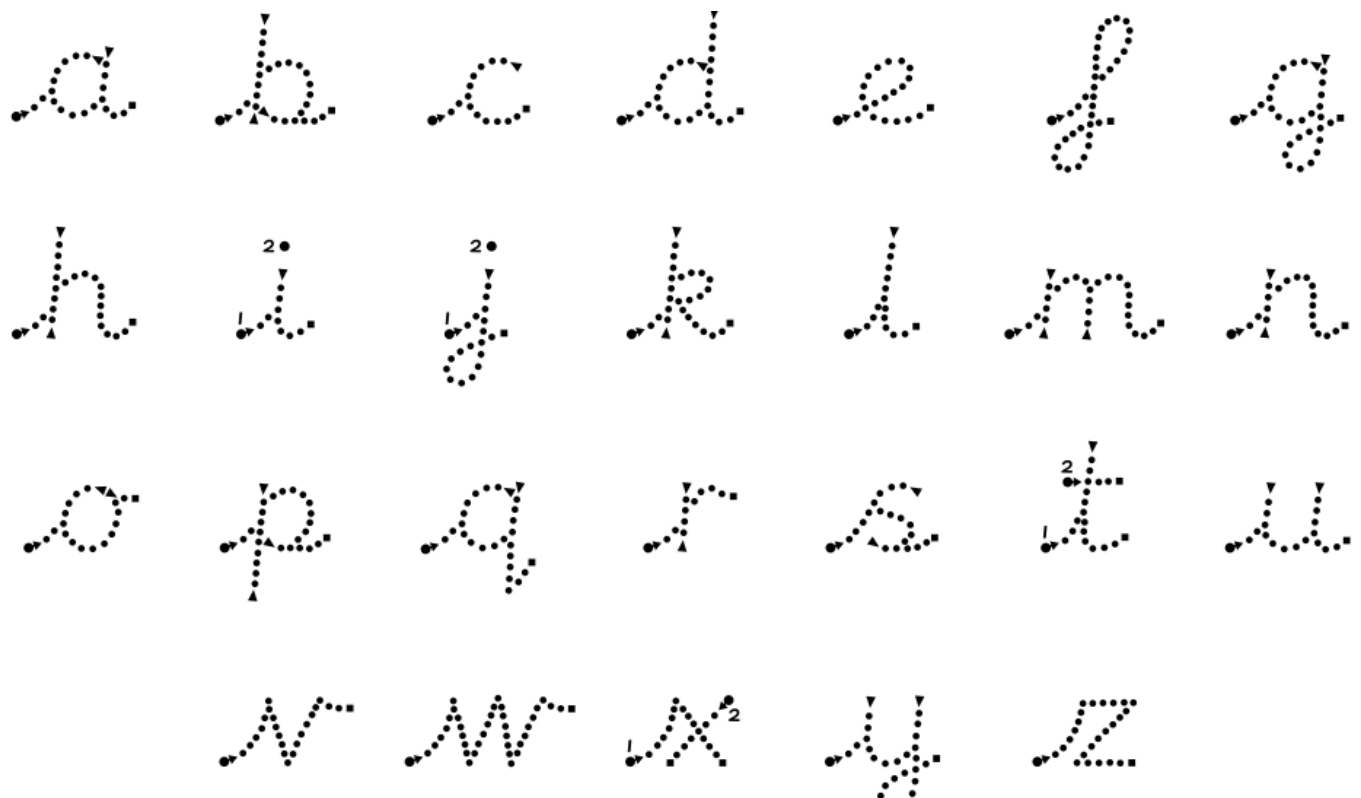
At each stage of the encoding process, children should be exposed to the appropriate level of the school's handwriting style as specified in the year group breakdown. Teachers and supporting adults should consistently model this handwriting. For example, if pupils are infants and writing in print – the adults write in print. Moreover, if the pupils are at the stage of writing in joined writing, the adults should write in the school's joined handwriting. Environments will display a variety of font types and joins. All classrooms will display the school alphabet as identified overleaf.

Year Group Break Down

*Early Years Foundation Stage (EYFS) and Year 1*



*End of Year 1/Early Year 2*



*From the mid-end of Year 2 onwards children will begin writing in joined cursive script using accurate lead-ins and lead-outs (entry and exit points) as per the school's pre-cursive script.*