



Newsletter Friday 15th May

Headteacher News

Dear Parents and Carers,

I wanted to use this week's newsletter to share some truly wonderful news with our school community and to personally thank you for the support, encouragement and challenge you continue to provide us as a school.

We are incredibly proud to announce that Loose Primary School has received an outstanding outcome in our recent Challenge **Partners Quality Assurance Review**.

The school was judged to be "Leading" in all areas, alongside receiving an Area of Excellence accreditation for our professional development culture — a very rare achievement and one that reflects the commitment, care and ambition that exists across our entire school community.

As Headteacher, I could not be prouder of the staff, governors and children who make this school such a special place each day. However, schools do not achieve outcomes like this in isolation. The partnership we have with our other schools and the strong relations we have with our families matter enormously, and I want to sincerely thank parents and carers for the trust, support and constructive challenge you provide. Together, we continue to shape and strengthen the school our children deserve.

The review recognised so many aspects of school life that we value deeply:

- the warm and caring guidance for every child and staff member across the school
- the exceptional behaviour, attendance and attitudes of our pupils;
- the inclusive support for children with SEND;
- the strength, care and guidance of teaching and learning;
- and the ambitious culture we hold for every child to succeed.

Reviewers spoke very highly of our children, describing them as proud, engaged and enthusiastic learners, while also highlighting the school's belief that "*potential is limitless*" for every member of our community.

The report also praised the school's strong curriculum, exemplary Early Years provision and the professional culture for staff that continues to drive improvement and excellence. Our **Area of Excellence accreditation** recognised the way staff are supported and work collaboratively to continually improve teaching and learning for children.

Most importantly, this recognition reflects the daily experiences of the children themselves.

The full report is attached to this newsletter and will also be available on our school website. I would strongly encourage all families to take the time to read it. I believe you should feel rightly proud of the school your child attends and the education, opportunities and care they receive here each day.

While we are proud of this achievement, we are also ambitious for what comes next. We will continue refining, improving and striving for the very best for every child at Loose Primary School.

Thank you again for your continued support - see you at Sports Day !

Trevor North **Headteacher**



YR Minibeast March & Y5 Forest School Exhibition



Sports Day Information

Times for Sports Day on Monday 18th May can be found below. Tuesday 19th is the reserve date.

CHILDREN SHOULD COME INTO SCHOOL WEARING THEIR PE KITS FOR THE DAY & BRING THEIR WATER BOTTLE.

Years 3 to 6 - From 8.45am parents will be allowed to make their way down to the field and we would ask all parents to be on the field for 9am. Finish time is approximately 11.30am.

Year R, 1 & 2 - From 1.15pm parents can enter via the **main Loose Road gate** and head down to the field for a 1.30pm start. Parents will collect their children from their classrooms as normal at the end of the day.

We ask when on the field, not to cross the taped area at any point. Please bring a waterproof and an umbrella with you in case of light rain. The children are so excited to showcase their skills and share a sense of community with you all.

PLEASE DO NOT PARK IN KING GEORGE V CAR PARK THANK YOU.



Diary Dates

Term 5

15/05 KS1 PTA Disco

18/05 Sports Day - KS2 AM & KS1 PM

19/05 Reserve Sports Day

21/05 Year 4 & 5 Trust Athletics Event

22/05 Year R Minibeast March

22/05 Y5 parents also invited in at 3pm for Forest School Exhibition

22/05 - Last day of term - children due back 01/06

Term 6

01/06 Back to school

02/06 to 05/06 Year 6 Residential Trip

02/06, 03/06 & 04/06 Skills4Bills Workshops Year 4

08-12/06 Year 6 Bikeability all week

11 & 12/06 PTA Fathers Day Gifts

17/06 New Year R Open Evening 6.30-7.45pm for September intake

17/06 Singing Assembly (Andy Davis) - parents invited 9am Orchard Hall

18/06 Guitar Assembly 9am Orchard Hall parents invited

18/06 Year 6 Parent Workshop secondary transition - 9.15-11.15 Brook Hall more info to follow

22 & 23/06 Year 5 & 6 Road Safety Talks

24/06 New Year R Transition Sessions

25/06 Year 6 secondary transition workshops

26/06 PTA Year R Disco

26/06 Year 4 Sleepover - more info to follow

29/06 Drumming Assembly 9am Orchard Hall families invited

02/07 Year 6 Secondary Taster Day, Year R to Year 5 transition day & New Year R Taster Session

03/07 Non Uniform Day for donations to the PTA Summer Festival

04/07 PTA Summer Festival

07/07 Piano Assembly 9am Brook Hall parents invited

10/07 Careers Day for Years 5 & 6 - more info to follow

14/07 Year 6 Production to parents 2pm

15/07 Year 6 Production to parents 2pm & 6pm

16/07 Year 6 Production to parents 6pm

17/07 Year 6 Colour Run 2.25pm

20/07 Year 6 Leavers Assembly 9.00am parents invited

20/07 Year 6 Leavers Festival 5.00pm until 7.00pm

21/07 Balloon arch farewell to Year 6 and last day of term



Request from Nursery

We are currently developing our loose parts and role play areas within nursery and would be very grateful for any donations of safe, clean items that are no longer needed at home.

Loose parts play encourages children's creativity, imagination, problem-solving, and communication skills.

We would especially appreciate donations of:

- Old keyboards
- Mobile phones (non-working are fine)
- Remote controls
- Calculators
- Pots, pans, wooden spoons, and kitchen utensils
- Metal tins
- Fabric pieces, scarves, and ribbons
- Buttons and large beads
- Cardboard tubes and small boxes
- Natural items such as pinecones, shells, pebbles, and sticks
- Old handbags, purses, hats, and dressing-up clothes
- Plastic containers and lids

- Small baskets or trays
- Toy vehicles
- Empty spice jars or clean containers
- CDs/DVDs
- Old cameras or computer mice

Please ensure all items are clean, safe, and free from sharp edges or small broken parts.

Thank you so much for your continued support!

Sophie



Hot Chocolate Friday

A huge well done to the children that were nominated last week and this. Your teachers are very proud of you!





Cricket at Linton Park

What a sensational day of sport! Our Year 4, 5, and 6 pupils took to the field this week for a brilliant day of cricket, showcasing not only their growing skills but also the fantastic sportsmanship we value so highly.

Year 4: The Undefeated Streak

The morning kicked off with our Year 4 squad. They began the day honing their skills with a series of batting, bowling, and fielding drills before putting their practice into action across three competitive games of pairs cricket.

The results were nothing short of spectacular:

Game 1 vs. Coxheath: A dominant performance leading to a win by a large margin!

Game 2 vs. Coxheath (Team B): A closer contest, but our pupils held their nerves to secure another victory by just 2 runs.

Game 3 vs. Hunton: A final triumph to round off the morning.

This meant our Year 4 team finished the session completely undefeated! Well done to all involved for such an incredible performance.

After a quick lunch break and a baton-pass back at school, our Year 5 and 6 cricketers took their turn at the crease. They followed suit with a rigorous round of drills to sharpen their technique before diving into their match play.

Because these games were still in full swing as we went to print, we don't have the final scores just yet so stay tuned for an update soon!

A Huge Thank You

Events like these wouldn't be possible without a dedicated team.

A massive thank you goes to:

Miss Carter & Mr. Bedford-Cooper for their tireless work in developing such talented cricketers and fostering a culture of fair play and excellence.

Linton Park Cricket Club for being such wonderful hosts and providing a fantastic environment for our students to play.

Interested in playing?

If your child has been inspired by the week's events and would like to join a local club, please get in touch with Linton Park Cricket Club for more information on how to get involved!







Family Fund- Helping Disabled Children

<https://www.familyfund.org.uk/>

Family Fund's mission is to make life better for families raising disabled and seriously ill children. We do this by providing:

- Grants and practical support to make day-to-day living easier and more enjoyable
- Information, connections and skills to empower families, so they can achieve their goals
- Opportunities for families to have an input on the policies and services that shape their lives



Nursery Assistant Vacancy

Please see vacancy in our nursery - the link is below if interested. Closing date is the 18th May.

<https://mynewterm.com/jobs/146143/EDV-2026-LPS-77906>



Request for donations for nurture



Ethic of Excellence Awards

Week ending 8th May

Pearl Class - Millie N

Opal Class - Maddison T

Crystal Class - Xaria T

Diamond Class - Lola B

Sapphire Class - Bisrat F

Moonstone Class - Alfie-Lee G

Tanzanite Class - Sonnie W

Aquamarine Class - Savannah S

Turquoise Class - Scarlet H

Coral Class - Evelyn S

Amber - Cairo T & Calvin S

Jade - Evelyn H

Emerald - Oliver C

Onyx Class - Kadie S & George R

Ruby Class - Ludovico Di B

Topaz Class - Jude C/K

Sunstone - Hiba K

Amethyst Class - Harry C

Zultanite Class - Edison A

Quartz Class - Maisie J

Week Ending 15th May

Pearl Class - Albie G

Opal Class - Reggie H

Crystal Class - Finley B

Diamond Class - Mila H

Sapphire Class - Saeed Islam

Moonstone Class - Nathan L

Tanzanite Class - Cristian C

Aquamarine Class - Malachi V/B

Turquoise Class - Kayla S

Coral Class - Theo B & Poppy M

Amber - Thomas N

Jade - Darcey E

Emerald - Sean H

Onyx Class - Jackson S

Ruby Class - Tobias G

Topaz Class - Adam Q

Sunstone - George P

Amethyst Class - Jason P

Peridot Class - Evie W & Whole Class

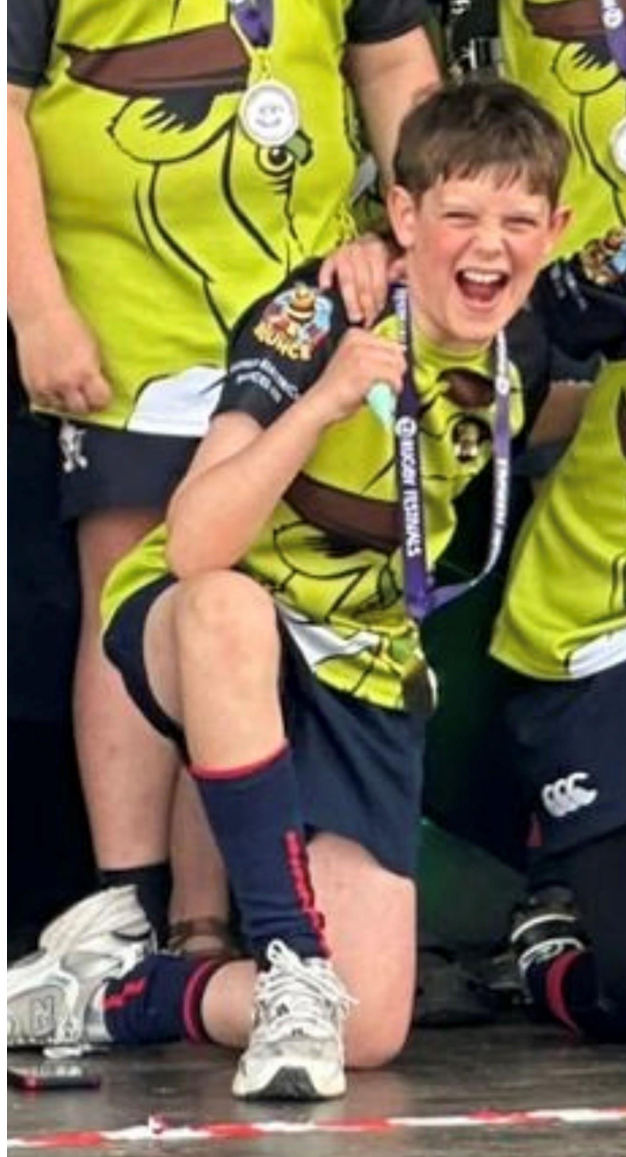
Zultanite Class - Whole Class

Quartz Class - Whole Class



Shout Outs

Well done to Edison A in Zultanite Class who brought in his medal from his recent rugby tour - he plays for Aylesford Bulls. His team came 7th out of 9 teams in the U11s and were up against some really big teams like Guildford and Cambridge. They did a fantastic job and are really proud of themselves!



Shout Out

Billy D from Emerald Class is taking on the challenge to raise money for Cancer Research UK. He will be, along with family, walking 60 miles in June. If you would like to help him raise some money for Cancer Research please click on the link below.

<https://fundraise.cancerresearchuk.org/page/charlottes-giving-page-54797056>



PTA Newsletter

KS1 Disco – Friday 15th May 📅

Our KS1 Disco will take place today Friday 15th May from **3:30pm – 5:00pm**. We're looking forward to an afternoon full of music, dancing and fun for the children!

Father's Day Gifts 🎁💙

Father's Day gift tickets will go on sale from **Monday** via the Arbor School Shop until the 5th June at 2.

Tickets are **£3 per gift**.

Year R Disco 📅

The Year R Disco will take place on **26th June** from **3:30pm – 4:30pm**.

Further details will follow next term.

Loose Rocks Music Festival 🎸 – Saturday 4th July

Join us for the **Loose Rocks Music Festival** on Saturday 4th July for a fantastic family day out!

We are excited to welcome local singers and dance schools performing throughout the day, alongside PTA games and a bar area.

There will also be plenty of food and treats available, including vegetarian options, from:

- The Grazing Grill
- Mister Softee
- The Bake Barn

Plus inflatables and lots more fun for the whole family!

Volunteers Needed

We are looking for volunteers to help on the day. If you are available and would like to support the event, please contact us at:

volunteers@loosepta.co.uk



Scooters & Bikes

Please can we remind all parents and children that bikes and scooters should not be ridden once on the school grounds. Our site is extremely busy at drop off and collection times, with lots of children, families and staff moving around, so riding bikes or scooters can create a safety risk. We kindly ask that all children dismount at the school gates and walk their bikes or scooters through the site. Thank you for your support in helping us keep everyone safe.



Correct Contact Details

extended.services@loose-primary.kent.sch.uk - please use this email address for **ALL** extended services bookings/queries/requests etc. Please **do not email the office with these**.

absence@loose-primary.kent.sch.uk - please use this email for all absence related matters including illness and hospital appointments and holiday notifications.

office@loose-primary.kent.sch.uk - use this for all other emails and urgent matters

loosenursery@loose-primary.kent.sch.uk - please use for ALL nursery queries.

Phone Number 01622 743549



Bricks 4 Kidz

Dear Parents,

We are excited to let you know we are back this half term with our amazing LEGO® camps! This time it's Pokémon themed but you don't have to be a huge Pokémon fan to attend and enjoy the fun.

Let your child swap screen time for build time and experience collaboration and making new friends in a whole new way. With a fantastic mix of LEGO® technic models, 2-D and 3-D creations, eye-catching mosaics plus free play, kids will bring their favourite Pokémon-inspired scenes to life. Plus games, challenges and supervised outside play at lunchtime.

Camps are led by our experienced, passionate, screened and trained mentors and assistants to make sure your kids are safe and happy.

Not only are kids having fun, which is the most important thing, but they are developing key life skills including: Critical thinking, Creativity, Team work and Problem solving. All skills that AI researches deem essential to future-proof your kids.

We look forward to welcoming your little builders. Please book to secure your place here <https://uk.bricks4kidznow.com/profile.php?id=7847&programid=5728>

Thank you for your support.

We would also appreciate your help for Term 6 bookings. We do have spaces available and so if you can send the attached PDF out to parents too, that would be most helpful. Thank you so much for your help! The class booking link is here <https://uk.bricks4kidznow.com/profile.php?id=7847&ts=1778749591>

Kind regards,

Caroline

POKÉMON BRICK CAMPS

bricks 4 kidz

EPIC LEGO® FUN

BIDBOROUGH	KINGS HILL
WEDNESDAY	THURSDAY
27TH	28TH
MAY	MAY

FOR KIDS AGED 5-12 YEARS

- BUILD YOUR FAVOURITE POKÉMON & SCENES
- PLAY GAMES & TAKE ON FUN CHALLENGES
- MAKE NEW FRIENDS & UNLEASH YOUR CREATIVITY!

BOOK 10-3 | £45 **SCAN HERE**

INCLUDES CUSTOM-MADE LEGO® MINIFIGURE TO TAKE HOME
BRICKS4KIDZ.UK/KENT & ENROLL NOW



SEE YOUR CHILD DEVELOP CRUCIAL SKILLS IN OUR AWESOME LEGO® CLASSES



SUMMER TERM - SPACES AVAILABLE!

CHILDREN LEARN MORE WHILE HAVING FUN.



Our clubs provide a safe, welcoming environment where every child can build confidence. Content and models are created by a curriculum team with topics and themes kids learn in school. Not only will they build awesome moving LEGO® models each week, they will also build:

- RESILIENCE** ✓
- CRITICAL THINKING** ✓
- CREATIVITY** ✓
- COLLABORATION** ✓
- PROBLEM SOLVING** ✓



All key skills that AI researchers deem essential to future-proof your kids!



bricks4kidz.co.uk/kent



@b4kmidkent



@bricks4kidz_kent

We Learn, We Build, We Play with LEGO® Bricks

BOWER GROVE GUIDED TALKS

10-11:30
Join us face to face or online

3rd October	What is anxiety
21st November	Strategies to support behaviour
30th January	Understanding Sensory processing
20th March	EBSA
15th May	Understanding emotional regulation
26th June	Transition support

BOOK A SPACE:
01622 726773 or
connectionsgroutalk@bower-grove.kent.sch.uk



EMOTIONAL REGULATION & NEURODIVERGENCE

FOR PARENTS & CARERS OF NEURODIVERGENT
CHILDREN AGED 5-11

A new interactive workshop exploring:

- What emotional regulation is and why it matters
- Why it can be more challenging for neurodivergent children
- Practical strategies to support your child
- Theories like the Window of Tolerance & Meltdown Mountain
- Ideas for after-school transitions & more



BOOKING ESSENTIAL
£12.50 per ticket

WEDNESDAY 17th JUNE
10:00 - 12:30



MAIDSTONE COMMUNITY SUPPORT CENTRE, MARSHAM ST, ME14 1HH



space2beme.org.uk

support@space2beme.org.uk

Registered Charity: 1140764

Information



<p>Baby Group Sensory</p> <p>4 Week rolling themes</p> <p>Exploring all the senses such as sight, sound, touch, taste and smell. 0-12 months</p>	<p>Baby Massage</p> <p>A 4-week course to learn soothing massage techniques to help your baby relax, sleep better and ease colic. Great for bonding. For babies 0-6 months. Please note we have 2 Baby Massage sessions.</p>	<p>NCT Infant Feeding Clinic</p> <p>Friendly, free infant feeding support from pregnancy through early parenthood. Trained peer supporters help you feel supported and connected. A great way to meet other parents. Please note we hold 4 Infant Feeding clinics a week: Parkwood, Southborough, Westborough & Wiltonwood.</p>	<p>Soilhill Togetherness</p> <p>A 10-week course helping parents understand behaviour and emotions from toddler to teen years.</p>
<p>Talking Walk Ins</p> <p>Play-based session where you can speak to a speech and language therapist. Early Years Practitioners, including childminders are welcome to attend alongside an adult who has parental responsibility. 2-4 years. Please note numbers are limited, see last 2 sessions: Greenfields & Southborough.</p>	<p>Little Talkers</p> <p>A playful 6-week course for 2-5 year olds to build speech, language and attention skills.</p>	<p>Health Visitor Clinic</p> <p>A drop in clinic for you to come along, have your baby weighed and speak to a member of the Health Visiting Team. Please arrive 15 minutes before the end of the clinic. Please note we hold 3 Health Visitor clinics a week: Parkwood, Southborough & Westborough.</p>	<p>Baby, Family & You</p> <p>5 Week Course Face to Face</p> <p>A supportive course for expectant and new parents to build positive routines and confidence in baby's first year. To express an interest please email: Greenfields@kent.gov.uk</p>
<p>Twins Group</p> <p>Group run by parents for families with multiple births. 0-5 years. 2nd & 4th Friday of the month</p>	<p>Little BookWorms</p> <p>Step into the magical world of books! 3 Fun sessions with stories and activities. Free book packs included. For children aged 1-4.</p>	<p>Stay & Play</p> <p>A relaxed session for families with play, singing, stories and messy fun for children aged 0-5. Please note we have 4 Stay & Play sessions: Greenfields, Parkwood, Southborough & Westborough.</p>	<p>Facebook: @MaidstoneFamilyHubs Instagram: @Maidstonefamilyhubs Twitter: @Maidstonefamilyhubs1140764</p>
<p>Healthy Start Vitamins</p> <p>Are you eligible for Healthy Start Vitamins? If so, complete this form and return to your GP.</p>	<p>Free Early Education</p> <p>Some 2 year olds can get up to 15 hours of free childcare per week. For more information and how to apply.</p>	<p>Useful Contact Numbers:</p> <p>Health Visiting Team 0300 013 2204</p>	<p>Please Note:</p> <p>For Health and Safety reasons there are room capacity limits in place. For more information about opening times give your local Hub a call!</p>

www.kent.gov.uk/familyhub
Family Hub Sites are run by Kent County Council



Maidstone Family Hubs
Timetable
20th April 2026 - 22nd May 2026

Our Family Hubs:

Parkwood 03000 412700 Parkwood, Maidstone ME13 9JR Parkwood@kent.gov.uk	Greenfields 03000 412967 Greenfields, Maidstone ME15 6DR Greenfields@kent.gov.uk	West Borough 03000 419361 Greenway, Maidstone ME16 8TL Westborough@kent.gov.uk
--	---	---

Day	Parkwood	Greenfields	Greenfields	West Borough
Monday	Health Visitor Clinic & NCT Infant Feeding Clinic 9.30-11.30	Stay & Play 9.30-11.00	solihull Together 24.05 - 30.05 If interested please contact: pa@solihull.net	Closed
Tuesday	Health Visitor Clinic 9.30-11.30	Baby Group Sensory 10.30-11.30 0-12 months	Little Talkers 10.00-11.00	NCT Infant Feeding Clinic 1pm-3pm
Wednesday	Baby Massage 10.00-11.00 2-6 months			
Thursday	Stay & Play 1.00-2.30	Stay & Play 10.00-11.30	Baby, Family & You 10.00-12.00 30 April - 28 May	
Friday	Twins Group 9.30-11.30 0-4 years	Talking Walk Ins 9.30-12.00 1 st & 4 th Fri of the month		

Community News

SPORTSREACH
SOCCER & NETBALL
SCHOOLS
26th - 30th AUGUST 2026
LOOSE
IN PARTNERSHIP WITH
ALL SAINTS' LOOSE
going for growth in Christ
WWW.SPORTSREACH.ORG.UK

SPORTSREACH SOCCER & NETBALL SCHOOLS

SPORT PLAYED IN A SAFE AND ENCOURAGING ENVIRONMENT CAN HAVE A POSITIVE IMPACT ON YOUNG PEOPLE AS THEY GROW IN CHARACTER AND CONFIDENCE. SOCCER, THE WORLD'S MOST POPULAR SPORT, IS PLAYED BY MORE BOYS AND GIRLS THAN ANY OTHER SPORT. NETBALL IS ANOTHER FANTASTIC TEAM SPORT WHICH IS INCREASINGLY POPULAR WITH YOUNG PEOPLE.

ABOUT THE COACHING

AT SPORTSREACH SOCCER & NETBALL SCHOOLS WE AIM TO DEVELOP SKILLS, TEAMWORK, AND SPORTSMANSHIP. WE ALSO TEACH THE GOOD NEWS OF JESUS CHRIST FROM THE BIBLE. THAT'S WHAT SPORTSREACH SPORTS SCHOOLS ARE ALL ABOUT...AN ALL-ROUND POSITIVE EXPERIENCE!

SOCCER AND NETBALL SCHOOLS IS AN OPPORTUNITY FOR YOUR CHILD TO RECEIVE THE HIGHEST QUALITY SPORTING INSTRUCTION FROM EXPERIENCED COACHES. TO ENSURE QUALITY INSTRUCTION, WE MAINTAIN A RATIO OF ONE COACH TO EVERY SIX TO EIGHT YOUNG PEOPLE. THE COACHING TAKES PLACE IN A SAFE ENVIRONMENT, WITH AN EMPHASIS ON FUN!

WHO IS IT FOR?

- SOCCER SCHOOLS IS FOR ANYONE AGED 7 - 14
- NETBALL SCHOOLS IS FOR ANYONE AGED 7 - 13

PLEASE NOTE: A SCHOOL MAY BE INTERESTED IN NETBALL, NOT NETS.

WHAT DOES IT COST?

THE PRICE FOR A PLACE AT SOCCER & NETBALL SCHOOLS IS \$95. EARLY BIRD DISCOUNT (IF BOOKED AND PAID BY 1st JUNE) - \$55. SHARING DISCOUNT (IF BOOKING FOR 7 OR MORE CHILDREN FROM THE SAME FAMILY) - \$55.

WHAT SHOULD I BRING?

- BOOTS SUITABLE FOR GRASS PITCHES AND SOFT PADS (FOR SOCCER SCHOOLS ONLY)
- TRAINING SHOES FOR NETBALL USE
- TRACKERS OR WARM FOOTWEAR
- PROTECTIVE LINER AND T-SHIRT

HOW DO I BOOK MY PLACE?

TO BOOK YOUR PLACE SCAN THE QR CODE OR GO TO: www.sportsreach.org.uk/schools

PLEASE BOOK ASAP AND BY 1st JUNE AT THE LATEST.

PLACES WILL BE OFFERED ON A FIRST-COME, FIRST-SERVED BASIS. (LATE ENTRIES WILL BE CONSIDERED IF PLACES ARE AVAILABLE.)

WHY IS IT HELD?

- A 100% FREE PROGRAMME OF INDIVIDUAL AND GROUP COACHING, INDIVIDUAL AND TEAM COMPETITIONS, INCLUDING BIBLE CUP
- SPORTSREACH BRANDED LEAN - INCLUDING A FOOTBALL, NETBALL, T-SHIRT, CERTIFICATE, 2 SPECIAL AWARDS & PRIZES
- COACHES' INTERVIEWS
- DAILY BIBLE TIME
- ON DAY 3 & 4, PARTICIPANTS HAVE AN OPPORTUNITY TO EXPLORE PERSONAL FAITH IN THEIR OWN LINE TO

WHEN IS IT HELD?

SUN 26th - SAT 30th AUG 2026 - 8PM

DRIVE ONE & PARK OF LOOSE, PARKWAY SQUARE, LOOSE, HAMPSHIRE, PO16 2JN

SUNDAY 30th ANCHORS SERVICE, 10.30AM AT ALL SAINTS' LOOSE, CHURCH ST, LOOSE, MAIDSTONE, ME15 6DR

SELENDRA BY REPRESENTATIVES

FOR FURTHER INFORMATION CONTACT:

ELICIA CROSSLEY
TEL: 07723041101
EMAIL: SPORTSREACHLOOSE@GMAIL.COM

SUMMER NETBALL CAMP



Monday 17 August - Wednesday 19 August 2026

FREE GIFT FOR ALL PARTICIPANTS! 09:30AM - 03:00PM | ages 8 - 16 ALL ABILITIES WELCOME!

RUN BY OUR FULLY QUALIFIED COACHING TEAM COME ALONG AND IMPROVE ALL OF YOUR NETBALL SKILLS!

£90.00 per session, or all 3 sessions for £80 (siblings £25.00 per day) open to boys and girls

FOR MORE INFO CONTACT YOUTH@MMNL.CO.UK

BOOK ONLINE AT WWW.MMNL.CO.UK/YOUTH

SITC News
#stonesinthecommunity



MAY

Half Term
Schools Out! Club 2025

Tue 26 May • Wed 27 May • Thu 28 May

Greenfields Community
Primary School
Shepway, Maidstone

Archbishop Courtenay
Primary School
Tovil, Maidstone

Leigh Academy Tree Tops
Furfield Close, Parkwood,
Maidstone

Sessions run for 4 hours between 10:00 - 14:00.

Schools Out Clubs provides the opportunity for children aged between 4 - 13 to participate in a range of sports and arts & craft activities.

Places are provided on a first come basis and charged at £5.00 per day. Payments are non-refundable. Visit stonesinthecommunity.org/programme/schools-out-holiday-club to book a space at one of our locations.



stonesinthecommunity.org

Creativity for
communities
Cohesion.Design

CHARITY FOOTBALL MATCH

Five Acre Wood School
VS
STAFF & VOLUNTEERS
*of Stones in the Community
& Maidstone United FC*

Scan for tickets

<p>Maidstone United Football Club Gallagher Stadium</p>	<p>Friday 12th June 2026 Doors 6pm Kick off 7.15pm</p>	<p>£10 Adult £5 under 16 £28 Family</p>
---	--	---

DRINKS & FOOD AVAILABLE TO PURCHASE

Raffle prizes to be won, tickets £2 on the night or from FAW School.



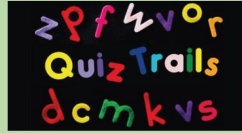
For tickets visit Eventbrite & search Five Acre Wood School



Enter our **FREE**
family
competition



Enter at Prize Draws
on our home page -
good luck!



A great activity for the holidays!
We're a Mum and two daughters team
creating educational, history based fun
Kent Quiz Trails!

They liven up a healthy
family walk!

FREE TO ENTER!



WHAT'S ON?
IN KENT.COM

WIN

Download
the work
app here!



WHAT'S ON?
IN KENT.COM

We've teamed up with
What's On In Kent to give away a
'Best of Kent Explorer Adventure Pack'!

Top Prize: One lucky winner will win a wicker picnic hamper
with plates, cutlery and glasses, one each of the Quiz Trail
short stories books, 5 Quiz Trails of your choice and lots of
sweet treats!

Three runner-up winners will each win
3 Quiz Trails of your choice!

Enter on our website
www.QuizTrail.co.uk

*Closing date 31st May 2026 at
11.59pm. Free to enter - no purchase
necessary.



Download the app
to discover
hundreds of
activities and
events going on
in Kent!

Special offers too!

www.QuizTrail.co.uk

Quote Discount
Code
DISCOUNT10
at our checkout

