

Special Educational Needs and Disabilities (SEND) Information Report

Loose Primary School in partnership with Coppice Primary Partnership



Inclusion Team

SEND Governor:

Paul Harrington

Coppice SEND Trustee:

Peggy Murphy

Inclusion Lead/SENCO/SEND Team:

Amy Malhotra – Inclusion Lead

Jo Black- SENCO

Contact No: 01622 743549

Inclusion Team Email:

office@loose-primary.kent.sch.uk

Kent SEND Information Report

Approved by: Trevor North **Date:** January 2026

Last reviewed on: January 2026

Next review due by: January 29027

Contents

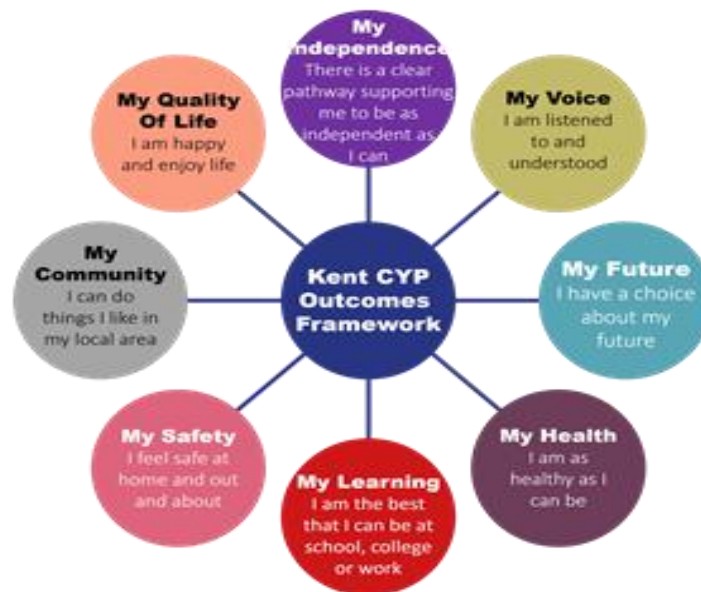
1. What types of SEND does the school provide for?	4
2. Which staff will support my child?.....	5
3. What should I do if I think my child has SEND?	7
4. What happens if the school identifies a need?	8
5. How will the school measure my child’s progress?	9
6. How will I be involved in decisions made about my child’s education?.....	10
7. How will my child be involved in decisions made about their education?	11
8. How will the school adapt its teaching for my child?	122
9. How will the school evaluate whether the support in place is helping my child?	133
10. How will the school ensure my child has appropriate resources?	133
11. How will the school make sure my child is included in activities alongside pupils who don’t have SEND?	134
12. How does the school make sure the admissions process is fair for pupils with SEN or a disability?	145
13. How does the school support pupils with disabilities?	145
14. How will the school support my child’s mental health and emotional and social development?	146
15. What support is in place for looked-after and previously looked-after children with SEN?	156
16. What support will be available for my child as they transition between classes or settings or in preparing for adulthood?.....	17
17. What support is available for me and my family? (Local Offer)	168
18. What should I do if I have a complaint about my child’s SEND support?	19
19. Supporting Documents.....	19
20. Glossary.....	20

Kent SEND Information Report

Dear Parents and Carers,

The aim of this Information Report is to explain how we implement our SEND & Inclusion policy. In other words, we want to show you how SEND support works in our school.

As educational professionals, we are all working towards the ultimate goal of growing independent young people as they prepare for adulthood. All provision and support we provide is working towards achieving the Kent Children and Young People (CYP) Outcomes Framework:

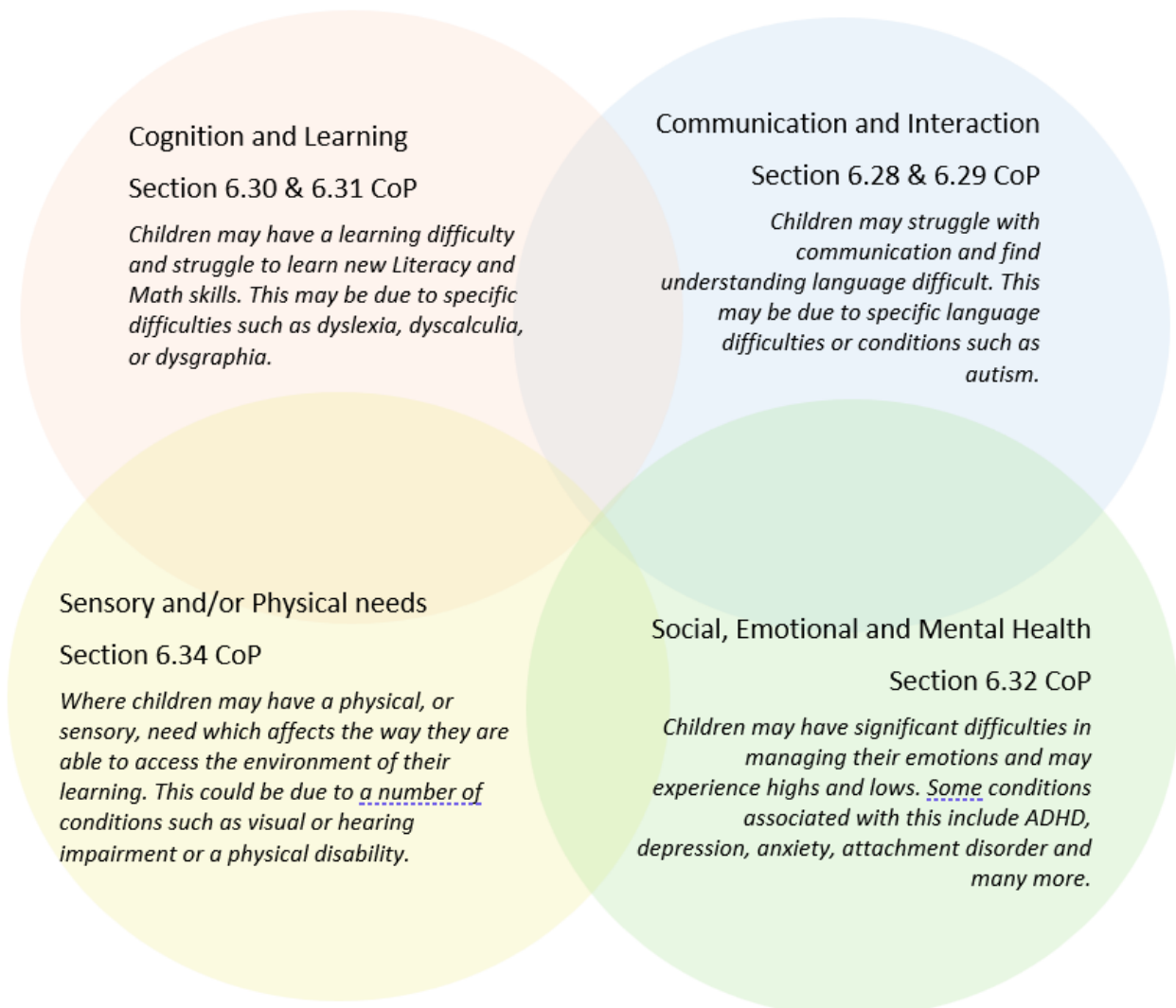


If you want to know more about our arrangements for SEND, read our SEND & Inclusion Policy alongside this Information Report. [Click here](#) for our SEND & Inclusion Policy.

Note: If there are any terms we've used in this information report that you're unsure of, you can look them up in the Glossary at the end of the report.

1. What types of SEND does the school provide for?

Our school provides for pupils with the following needs (as outlined in the SEND Code of Practice 2015):



Often you will find that children's needs overlap and are rarely confined to one area of need, which is why it is important to gain a holistic overview of your child.

More information about the Areas of Need can be found in the Special educational needs and disability code of practice: 0 to 25 years ([link below](#)).

[SEND Code of Practice January 2015.pdf \(publishing.service.gov.uk\)](#)

2. Which staff will support my child, and what are their key responsibilities?



At Loose Primary School all staff are considered responsible for supporting the needs of pupils with SEND. Our staff are committed to regular, high-quality training to ensure that they have the knowledge and skills to better meet a wide range of pupil needs.

Below outlines key staff who will be supporting your child. *Please note that this list is not exhaustive.*

Our Special Educational Needs Co-ordinator, or SENCO

Our SENCO is Mrs Black

Mrs Black has over three years' experience in this role and has worked as a class teacher prior to this for 19 years. She is a qualified teacher.

Mrs. Black is working towards achieving the National Award in Special Educational Needs Coordination with Ambition Institute for training

Class/subject teachers

All of our teachers receive in-house SEN training, and are supported by the SENCO to meet the needs of pupils who have SEN e.g. Autism Education Training, working memory, writing adaptations, Developmental Language Disorder, Mainstream Core Standards Training

In addition, all teaching staff are signposted to external training opportunities including the offer from STLS, KEPS, The Education People and other external training providers.

Support Staff (TAs)

We have a large team of support staff, including two higher-level teaching assistants (HLTAs) who are trained to deliver SEN provision.

Our support staff are trained to deliver a range of interventions e.g. Precision Teaching, Alphabet Arc, Train the Tutor, BEAM, Language for Thinking, Power of 2 and Soundswrite.

In addition, we have two Pastoral practitioners who are trained in a range of therapeutic and wellbeing related interventions e.g. Drawing and Talking Therapy, Lego Therapy, Talkabout, Traumas Informed approaches and sensory circuits.

In the last academic year our support staff and Pastoral Practitioners have continued to receive updated and research-based training. Our CPD program is ongoing throughout the year as we respond to the needs of our children.

External agencies

Sometimes we need extra help to offer our pupils the support that they need. Whenever necessary we will work with external support services to meet the needs of our pupils with SEND and to support their families. These may include:

- Child and adolescent mental health services (CAMHS)
- Education welfare officers
- Educational psychologists
- GPs or paediatricians
- NELFT practitioners
- Occupational therapists
- Therapeutic practitioners
- Safeguarding services
- School nurses
- SEND Inclusion Advisor
- Specialist Teacher Service
- Speech and language therapists
- Voluntary sector organisations such as Slide away or Dandelion Time



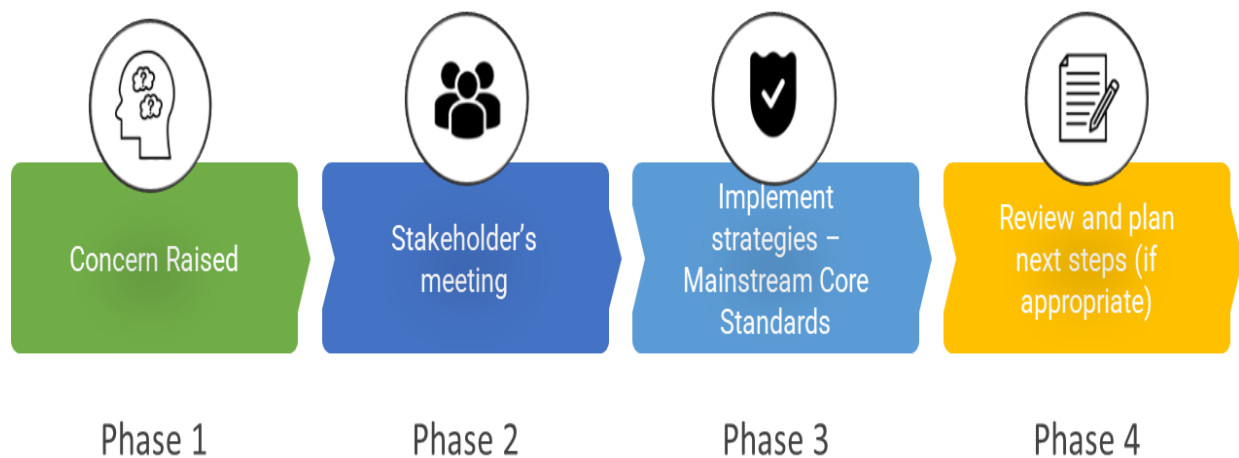
3. What should I do if I think my child has SEND?



<p>Phase 1</p>	<p>If you think your child might have SEND, raise your concern with the school by speaking with your class teacher or by contacting the school on 01622 743549 or via email office@loose-primary.kent.sch.uk</p>
<p>Phase 2</p>	<p>We are happy to meet with you to discuss your concerns and try to get a better understanding of what your child's strengths and difficulties are. Together we will decide what outcomes to seek for your child and agree on next steps. We will make a note of what's been discussed and add this to your child's record.</p>
<p>Phase 3</p>	<p>We will implement the agreed strategies and monitor these over an agreed period of time. These are likely to be universal strategies set out in the mainstream core standards. A copy of these can be found here</p> <p>This will initiate the 'Graduated Approach' where support will be continually reviewed. See next page for more details.</p>
<p>Phase 4</p>	<p>If we decide that your child needs SEND support, we will formally notify you in a letter and your child will be added to the school's SEND register. They will receive additional support which will be recorded on their Individual Learning Plan. This plan will be reviewed using the assess, plan, do, review model and updates shared with you throughout the academic year.</p>

4. What happens if the school identifies a need?

The same process is followed if a concern is raised by the school. Class teachers will discuss their concern with the yourselves as parents/carers. Following this and as appropriate the concerns will also be discussed with either the SENCO or DHT during Pupil Progress Meetings or SENCO Surgeries which are held several times a year.



All our class teachers are responsible for the monitoring of all pupils who have been identified as having SEND or may have SEND. They also review those who are not making the expected level of progress in their schoolwork or socially or emotionally.

If the teacher notices that a pupil is having difficulties, they try to find out if the pupil has any gaps in their learning. If they can find a gap, the school will provide appropriate support. Pupils who don't have SEND usually make progress quickly once the gap in their learning has been filled.

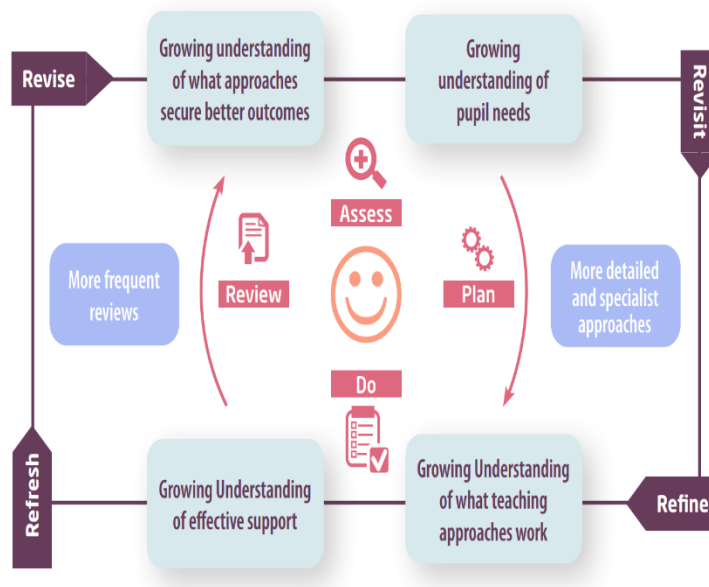
If the pupil is still finding it difficult to make the expected progress, the teacher will talk to either colleagues, the DHT or the SENCO. They will contact you to discuss the possibility that your child has SEND, and the school will follow the graduated approach (see previous page).

5. How will the school measure my child's progress?

When children join us in Early years, we monitor and track progress using the Early Learning Goals, we also complete a Language Link Screener with all EYFS children within the first term to support us with the early identification of SEN concerns. As they move into KS1 and KS2 we continue to track progress through ongoing teacher assessment and judgments and through standardised tests over the course of the year.

We will follow the 'graduated approach' to meeting your child's SEND needs.

The graduated approach is a 4-part cycle of **assess, plan, do, review**.



Assess	If your child is not making the expected level of progress, we will make an assessment to find out what strengths and difficulties your child has. We will ask for you and your child's input, as well as getting help from external professionals where necessary.
Plan	In discussion with you and your child, we will decide what outcomes we are hoping to achieve. We will make a plan of the support that we will offer your child to help them meet those outcomes. We will make a record of this and share it with you and all relevant school staff.
Do	We will put our plan into practice. The class teacher, with the support of the SENCO, will be responsible for working with your child on a daily basis, and making sure the support we put in place is having the impact we intended.

Review	We will assess how well the support we put in place helped the pupil to meet the outcomes we set. We will use our improved understanding of your child's needs to improve the support we offer; this may mean the Plan, Assess, Do, Review cycle continues.
---------------	---

6. How will I be involved in decisions made about my child's education?

We will provide annual reports on your child's progress

A member of staff who knows your child well will meet you three times a year, to:

- Set clear outcomes for your child's progress
- Review progress towards those outcomes
- Discuss the support we will put in place to help your child make that progress
- Identify what we will do, what we will ask you to do, and what we will ask your child to do

The SENCO may also attend these meetings to provide extra support.

We know that you're the expert when it comes to your child's needs and aspirations. So, we want to make sure you have a full understanding of how we're trying to meet your child's needs, so that you can provide insight into what you think would work best for your child.

We also want to hear from you as much as possible so that we can build a better picture of how the SEND support we are providing is impacting your child outside of school.

If your child's needs or aspirations change at any time, please let us know right away so we can keep our provision as relevant as possible.

If you have concerns that arise between these meetings, please contact the class teacher in-person or via the office and they will help to identify with you the most appropriate course of action.

7. How will my child be involved in decisions made about their education?

The level of involvement will depend on your child's age and individual needs. We recognise that no two pupils are the same, so we will decide on a case-by-case basis, with your input.

We may seek your child's views by asking them to:

- Attend meetings to discuss their progress and outcomes
- Prepare a presentation, written statement, video, drawing, etc.
- Discuss their views with a member of staff who can act as a representative during the meeting
- Complete a survey



8. How will the school adapt its teaching for my child?

Your child's teachers are responsible and accountable for the progress and development of all the pupils in their class.

High-quality teaching is our first step in responding to your child's needs. We will make sure that your child has access to a broad and balanced curriculum in every year they are at our school.

We will adapt our approaches to how we teach to suit the way the pupil works best. There is no 'one size fits all' approach to adapting the curriculum, we work on a case-by-case basis to make sure the adaptations we make are meaningful to your child and are guided by the Mainstream Core Standards in the first instance.

These adaptations may include:

- Adapting our approaches, for example, giving longer processing times, pre-teaching of key vocabulary, reading instructions aloud, etc.
- Adapting our resources and staffing
- Using recommended aids, such as laptops, coloured overlays, visual timetables, larger font, etc.
- Support staff will support pupils appropriately depending on their presentation of need
- Scaffolding lesson materials e.g. sentence stems, cloze procedure, visual representations

We may also provide the following interventions:

- Reading / phonics interventions e.g. BRS, Language for Thinking
- Maths based intervention e.g. Power of 2
- Speech, language and communication intervention e.g. Language and Speech Link
- Fine and gross motor skill interventions e.g. BEAM
- Social and emotional interventions e.g. Lego Therapy, Sensory Circuits.

These interventions are part of our contribution to Kent County Council's local offer.

9. How will the school evaluate whether the support in place is helping my child?

We will evaluate the effectiveness of provision for your child by:

- Reviewing their progress towards their goals each long term
- Reviewing the impact of interventions after 10/12 weeks
- Using pupil questionnaires
- Monitoring by the SENCO, Senior Leadership Team and subject leads.
- Hold an annual review (if they have an education, health and care (EHC) plan)



10. How will the school ensure my child has appropriate resources?

It may be that your child's needs mean we need to provide additional resources such as:

- Additional resources to support their learning
- Adaptations to in class support
- Further training for our staff
- External specialist expertise

Where appropriate, we will consult with external agencies to get recommendations on what will best help your child access their learning and use our best endeavours to ensure these are supplied.

11. How will the school make sure my child is included in activities alongside pupils who don't have SEND?



The expectation is that all schools provide an inclusive provision for all pupils. It may be necessary for some pupils to receive interventions in addition to a broad and balanced curriculum.

All of our extra-curricular activities and school visits are available to all our pupils, including our before and after-school clubs.

All pupils are encouraged to go on our school trips, including our residential trip.

All pupils are encouraged to take part in all enrichment activities such as sports day/school plays/special workshops.

No pupil is ever excluded from taking part in these activities because of their SEN or disability and we will make whatever reasonable adjustments are needed to make sure that they can be included.

12. How does the school make sure the admissions process is fair for pupils with SEN or a disability?

Please see our admissions policy [here](#)

13. How does the school support pupils with disabilities?



Under the Equality Act 2010 a person is defined as having a disability if they have a physical or mental impairment that has a 'substantial' and 'long-term' negative effect on your ability to do normal daily activities. Please see our Accessibility Policy

<https://www.loose-primary.kent.sch.uk/attachments/download.asp?file=744>

14. How will the school support my child's mental health and emotional and social development?

We provide support for pupils to progress in their emotional and social development in the following ways:

- Pupils with SEND are also encouraged to be part of a range of clubs to promote teamwork/building friendships
- Pupils with SEND are encouraged to be part of the wider school communities e.g. school council, ECO council, prefects and reading leaders
- We provide a pastoral provision across our school for pupils who need extra support with social or emotional development and to ensure we listen and respond to the views of pupils with SEND.

- We have a 'zero tolerance' approach to bullying. We prevent bullying in the school by following our school behaviour policy.

15. What support is in place for looked-after and previously looked-after children with SEND?

Mrs Dutch (FLO/DSL), Mrs Stanley (FLO/DSL) and Mrs Johnson (AHT/LAC/PLAC) will work with our SENCO, to make sure that all teachers understand how a looked-after or previously looked-after pupil's circumstances and their SEND might interact, and what the implications are for teaching and learning.

Pupils who are looked-after or previously looked-after will be supported much in the same way as any other child who has SEND. However, looked-after pupils will also have a personal education plan (PEP). We will make sure that the PEP and any SEND support plans or EHC plans are consistent and complement one another.

16. What support will be available for my child as they transition between classes or settings or in preparing for adulthood?

Between years

To help pupils with SEND be prepared for a new school year we:



- ask both the current teacher and the next year's teacher to attend transition meetings with each other as well as meeting with the SENCO and FLO at the end of the year when the pupil's SEND is discussed
- schedule a series of transition opportunities throughout term 6 which include whole school and bespoke opportunities with the incoming teacher and support staff.

Between schools

When your child is moving on from our school, we will ask you and your child what information you want us to share with the new setting.

Transition to secondary school

The SENCO of the secondary school will liaise with teachers and the SENCO to discuss needs as appropriate. They will discuss the needs of all the pupils who are receiving SEND support. Pupils will be prepared for the transition by:

- Practising with a secondary school timetable
- Learning how to get organised independently
- Plugging any gaps in knowledge

17. What support is available for me and my family?

If you have questions about, SEND, or are struggling to cope, please get in touch to let us know. We want to support you, your child and your family.

To see what support is available to you locally, have a look at the Kent Local Offer. KCC publishes information about the local offer on their website, this includes local charities supporting families of pupils with SEND.

<https://www.kent.gov.uk/education-and-children/special-educational-needs-and-disabilities/about-the-send-local-offer>

Our local special educational needs and disabilities information advice and support services (SENDIASS) organisations are <https://www.iask.org.uk/>

National charities that offer information and support to families of pupils with SEND are:

- [IPSEA](#)
- [SEND family support](#)
- [NSPCC](#)
- [Family Action](#)
- [Special Needs Jungle](#)

18. What should I do if I have a complaint about my child's SEND support?

Complaints about SEND provision in our school should be made to the class teacher/SENCO in the first instance. They will then be referred to the school's complaints policy.

<https://www.coppiceprimarypartnership.kent.sch.uk/about-us/coppice-key-documents/about-us/coppice-key-documents/trust-policies>

If you are not satisfied with the school's response, you can escalate the complaint. In some circumstances, this right also applies to the pupil themselves.

To see a full explanation of suitable avenues for complaint, see pages 246 and 247 of the [SEND Code of Practice](#).

If you feel that our school discriminated against your child because of their SEND, you have the right to make a discrimination claim to the first-tier SEND tribunal. To find out how to make such a claim, you should visit: <https://www.gov.uk/complain-about-school/disability-discrimination>

You can make a claim about alleged discrimination regarding:

- Admission
- Exclusion
- Provision of education and associated services
- Making reasonable adjustments, including the provision of auxiliary aids and services

Before going to a SEND tribunal, you can go through processes called disagreement resolution or mediation, where you try to resolve your disagreement before it reaches the tribunal.

https://www.kent.gov.uk/data/assets/pdf_file/0011/6140/KPPS-Disagreement-Resolution-Services.pdf

19. Supporting documents

- *Equality Policy*
- *Child protection and safeguarding policy*
- *Behaviour Policy*
- *Accessibility Plan*
- *Attendance Policy*
- *SEND policy*
- *SEN & Disabilities Code of Practice 2015*
- *Mainstream Core Standards*



20. Glossary

- **Access arrangements** – special arrangements to allow pupils with SEND to access assessments or exams
- **Annual review** – an annual meeting to review the provision in a pupil’s EHC plan
- **Area of need** – the 4 areas of need describe different types of needs a pupil with SEND can have. The 4 areas are communication and interaction; cognition and learning; physical and/or sensory; and social, emotional and mental health needs.
- **CAMHS** – child and adolescent mental health services
- **Differentiation** – when teachers adapt how they teach in response to a pupil’s needs
- **EHC needs assessment** – the needs assessment is the first step on the way to securing an EHC plan. The local authority will do an assessment to decide whether a child needs an EHC plan.
- **EHC plan** – an education, health and care plan is a legally-binding document that sets out a child’s needs and the provision that will be put in place to meet their needs.
- **First-tier tribunal/SEND tribunal** – a court where you can appeal against the local authority’s decisions about EHC needs assessments or plans and against discrimination by a school or local authority due to SEND
- **Graduated approach** – an approach to providing SEND support in which the school provides support in successive cycles of assessing the pupil’s needs, planning the provision, implementing the plan, and reviewing the impact of the action on the pupil
- **Intervention** – a short-term, targeted approach to teaching a pupil with a specific outcome in mind

Kent SEND Information Report

- **Local offer** – information provided by the local authority which explains what services and support are on offer for pupils with SEND in the local area
- **Outcome** – target for improvement for pupils with SEND. These targets don't necessarily have to be related to academic attainment
- **Reasonable adjustments** – changes that the school must make to remove or reduce any disadvantages caused by a child's disability
- **SENCO** – the special educational needs co-ordinator
- **SEN** – special educational needs
- **SEND** – special educational needs and disabilities
- **SEND Code of Practice** – the statutory guidance that schools must follow to support pupils with SEND
- **SEND information report** – a report that schools must publish on their website, that explains how the school supports pupils with SEND
- **SEND support** – special educational provision which meets the needs of pupils with SEND
- **Transition** – when a pupil moves between years, phases, schools or institutions or life stages